

1140L Pressure Washer Bowser Operation & Maintenance Manual



- Highway towable pressure washer bowser; with twin high-speed axle, overrun brakes, hitch and damper
- Tough, rotationally moulded polyethylene tank mounted on a galvanised tubular steel chassis, with lockable manway and 2" bottom outlet for easy cleaning
- Large mounting plate to accommodate pressure washer unit, manual rewind hose reel, battery and double lance holder; all protected by tubular steel side bars
- Electric start Honda petrol engined pressure washer unit
- Capable of mounting 30L capacity stainless steel detergent and ant-freeze tanks above the two mudguards
- 4 x lift points

Nominal Capacity	Overall Length	Overall Width	Overall Height	Empty Weight	Full Weight
1140L	3855mm	1757mm	1242mm	approx. 580kg	approx. 1720kg

For your records

Pressure washer bowser's details below:
(You can find these on the Sales Order & VIN plate mounted on the chassis)

Product / water bowser capacity _____

Serial Number _____

Chassis Number _____

Supplier name _____

Date purchased _____

Contact

Fuel Proof Ltd.
Middleton Business Park,
Middleton Road,
Morecambe,
Lancashire,
LA3 3FH

Telephone: 01524 850685

Fax: 01524 859681

Website: www.fuelproof.co.uk

Email: sales@fuelproof.co.uk

Intellectual property

© 2015 Fuel Proof Ltd. All Rights Reserved

All Trademarks are the property of their respective owners.

Symbols used in the manual



Warning that if not avoided, the situation could result in property damage, equipment damage or injury; failure to follow this warning will void your product warranty.



Important:

Highlights important text to allow for proper installation, operation or maintenance of the pressure washer bowser; failure to read and understand the text may result in improper procedural use and may void your warranty.



Contents

1. Important notice
2. Safety warnings
3. Tank information
4. Filling the water bowser
5. Operator instructions
 - 5.1 Pre-operation check
 - 5.2 Using the lance
6. General guidelines
7. Troubleshooting
8. Maintenance
9. Warranty

1. Important notice

The following information must be carefully read by the operator and fully understood: operator should know its applications, its limitations and any hazards involved. The operator is responsible for the safe use of the pressure washer's equipment. Do not remove, deface, or render inoperable any of the safety devices or warnings on this equipment.

Every effort has been made to ensure that information in this manual is accurate and current. However, Fuel Proof reserves the right to change, alter or otherwise improve the product and this document at any time without prior notice.

The 1140L water highway bowser is tested for function and leaks before dispatch.

2. Safety warnings

Misuse can cause danger to the operator, the function of the pressure washer, and the surrounding environment.

To ensure the safety and well-being of all users during operation and maintenance, it is important that the applicable regulations regarding occupational safety be observed, as well as personal protection measures. The following guidelines should be read and adhered to during use.

The end user is responsible for conducting their own risk / COSSH assessments before using this equipment.



Personal protective equipment.

Suitable PPE in the form of hand, eye and foot protection should be worn by the operator. Respiratory protective equipment (RPE) may be needed if using hazardous substances - seek advice from your RPE supplier.



No unauthorised personnel. Only users with correct training should operate this equipment



Do not attempt to get inside the water tank. This is a confined space. NO ENTRY.



See the separate user manual for the electric start petrol engine pressure washer unit for full guidelines on this equipment.



MAXIMUM PRESSURE OF THIS UNIT IS 250 BAR



MAXIMUM FLOW RATE OF THIS UNIT IS 30 LITRES PER MINUTE



High pressure spray can cause extremely serious injuries: can pierce skin and its underlying tissues, leading to serious injury and possible amputation. It can also damage eyes or burst eardrums. Use with extreme caution.

- Never aim the lance at people, animals or plants.
- Do not allow CHILDREN to operate the pressure washer.
- Never repair high pressure hose, always replace it.
- Never touch a leaking hose, shut the unit down before handling.



Excessively high or low operating speeds increase risk of injury and damage to pressure washer.

- Do not tamper with governed speed.
- Do not operate the pressure washer above the rated pressure.



High pressure spray can cause paint chips or other particles to become airborne, and can damage fragile items such as glass.



Petrol and its vapors are extremely flammable and explosive. Fire or explosion can cause severe burns or death.

- Refuel in a well ventilated area with the engine stopped.
- Always fill the fuel tank outdoors, do not overfill tank, and allow space for fuel expansion.
- Be careful not to spill fuel when refuelling. If any fuel is spilled, make sure the area is dry before starting the engine.
- Do not smoke or allow naked flames or sparks in the refuelling area or where fuel is stored.
- Store fuel in UN approved containers.



A running engine gives off carbon monoxide, an odorless, colorless, poison gas. Breathing carbon monoxide will cause nausea, fainting or death.

- Operate pressure washer ONLY outdoors.
- Use a respirator or mask whenever there is a chance that vapors may be inhaled.



Running engines produce heat. Temperature of muffler and nearby areas can reach or exceed 150°F (65°C). Severe burns can occur on contact.

- Do not touch hot surfaces.
- Allow equipment to cool before touching.



High pressure spray could cause you to fall: if too close to the cleaning surface or in a puddle, or from the recoil of initially pressing the lance's trigger.

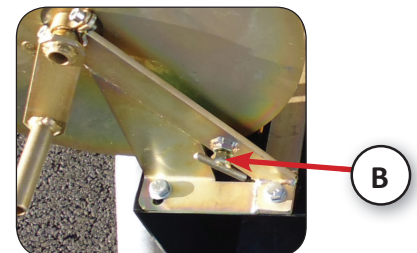
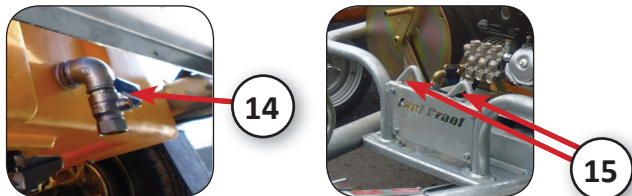
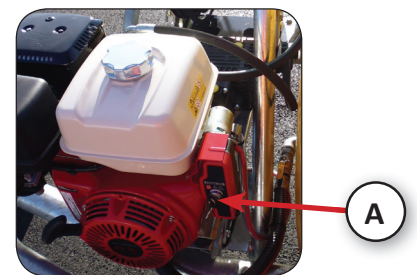
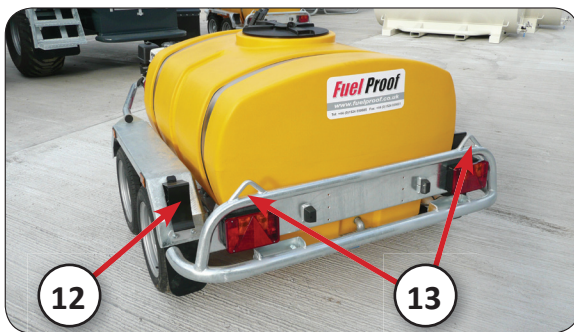
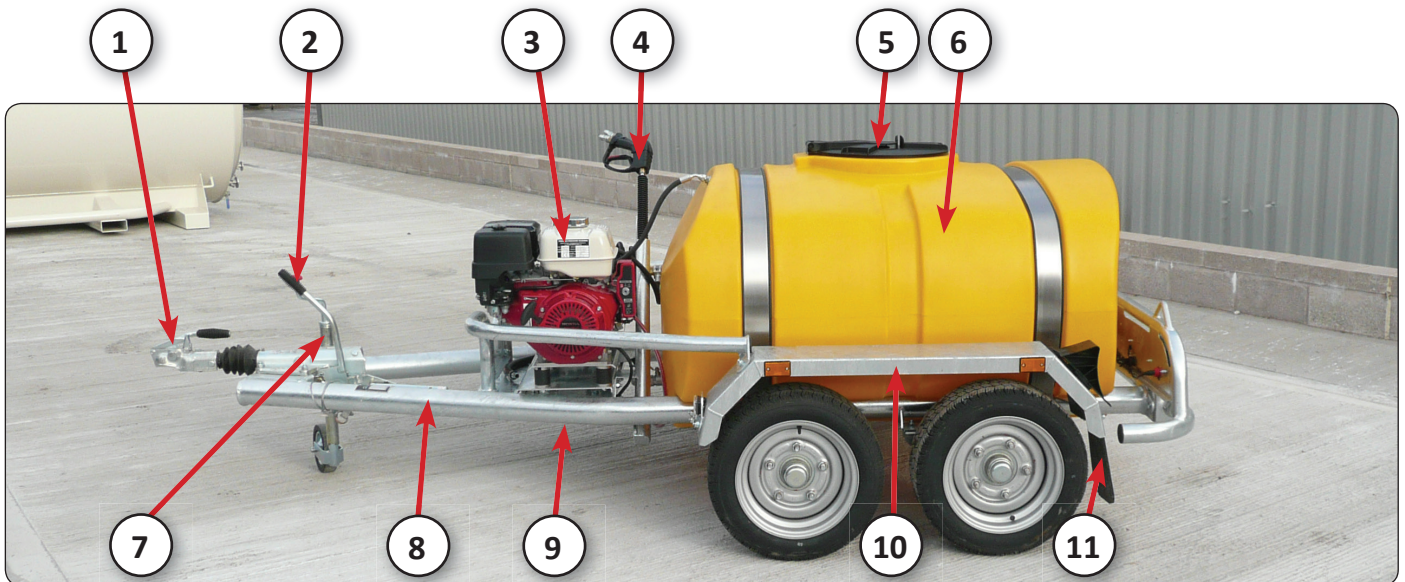
- Keep spray nozzle between 8 to 24 inches away from cleaning surface.
- The cleaning area should have adequate slopes and drainage to reduce the possibility of a fall due to slippery surfaces.
- Operate this unit on a stable surface.



Spray contact with electrical wiring can result in electrocution.

- Keep water spray away from the battery and its wiring.
- Ensure nearby electrical fittings are suitably waterproofed.

3. Tank information



Item	Description
1	Hitch
2	Hand brake
3	Electric start Honda petrol engined pressure washer unit
4	Pressure washer lance and lance holder
5	Lockable manway with basket filter
6	1140L polyethylene water tank
7	Jockey wheel
8	Galvanised tubular steel chassis
9	Battery & holder (under mount plate)

10	Mudguard
11	Spray suppression flap
12	Wheel chock
13	Rear lift points
14	Drain valve
15	Front lift points
16	Manual rewind hose reel, with 3/8" hose
17	Tank isolation valve
18	Return to bowser line
A	Hose reel lock
B	Engine ON / OFF switch

4. Filling the water bowser

- Open the lockable manway (5) lid
- Ensure the drain valve (14) and tank isolation valve (17) are closed
- Check the basket filter is correctly positioned in the manway opening
- Commence filling the bowser with water
- Do not overfill, monitor the filling progress
- Once filled to desired level, stop filling and close the manway lid
- Clean up any drips or spillages



Important: DO NOT LEAVE TANK UNATTENDED DURING FILLING

DO NOT FILL TANK WITH DIRTY WATER

5. Operator instructions

5.1 Pre-operation check

- Check the pump's oil level
- Ensure there is enough water in the tank (6). **Never run the pump without water in the bowser.**
- Ensure the lance (4) is securely attached to the hose
- Open lance's spray gun to relieve pressure before starting
- Make sure the bowser is in a level position
- Ensure the petrol engined pressure washer (3) is connected to the battery (9) under the mount plate

5.2 Using the lance

- Open the tank isolation valve (17)
- See the separate manual for the electric start Honda petrol engined pressure washer unit (supplied with bowser) for full engine user guidelines and details. Check the choke and engine's fuel level, and then turn the switch (A) to start the pump. **(Max. pressure = 250 Bar, max. flow = 30lpm)**
- Unscrew the manual rewind hose reel's lock (B) to release the hose on the reel
- Take the lance (4) out of it's holder, and pull the required length of hose out from the reel
- Pull the lance's trigger to activate the pressure washer
- Once operation is complete, release the lance trigger and return the lance to its holder
- Rewind the hose by rotating the handle clockwise on the manual rewind hose reel, ensuring there are no kinks or bends in the hose, and lock the reel in place using the lock (B)
- Turn the pump off (A) and close the isolation valve (17)

6. General guidelines

Do

- Position the bowser on a stable surface
- Review the electric start petrol pump's separate manual before use
- Open isolation valve before use, and close after
- Rewind hoses and return lance to holder
- Check hoses and fittings for leaks each time the tank is used
- Periodically empty and clean water tank, and clean the manway mesh strainer
- Store fuel in suitable UN approved containers

Do Not

- Lift the bowser with uncertified lifting chains or equipment
- Leave the tank unattended during pressure washer operations
- Allow the petrol pump to run dry
- Leave pressure washer unit running for prolonged periods without water going through lance

7. Troubleshooting

	Remedial Action
Pump has following problems: failure to produce pressure, erratic pressure, chattering, loss of pressure, low water volume.	<ul style="list-style-type: none">• Check the water inlet hose is not blocked, kinked or leaking• Check there is water in the bowser• Check the lance hose is not blocked, kinked or leaking• Check the lance is not leaking• Check the lance nozzle is unobstructed• Check poppet valves on pump
Engine will not start; or starts and runs rough	<ul style="list-style-type: none">• Check there is fuel in the tank• Check connection to battery• Check that there is no water in the fuel (drain and then refill)• See the Honda petrol engine's separate manual• Check oil level• Check spark plugs

8. Maintenance

The pressure washer bowser should be checked at regular intervals for damage to the tank and leaks at the fittings.

Daily Checks

Item	Action
Wheel nuts	Wheel nuts torque should be checked at 110Nm (81 Ft/lbs)
Tyre Pressure	Tyre pressures should be maintained at 64 psi (4.4 Bar)
Lights	Check correct functionality of all tailboard and side repeater lighting

6 weekly Checks

Item	Action
Brake lines	Ensure no leakage or hose splitting is occurring around hydraulic fittings
Hand Brake	Hand brake must function to a level capable of preventing movement of the bowser.
Drawbar	Check coupling device for correct functionality. Ensure hitch can be locked onto vehicle towing bracket securely
Running gear	Visual check of axles and hubs
Hoses	Ensure hoses are free from obstruction, kinks or splits. Where necessary a pressure test should be conducted
Battery terminals	Check battery connection is secure and terminals are free from corrosion. Periodically check electrolyte levels
Petrol engine pump	A number of components on the pump may require monitoring or servicing. For a full list of components and instructional guide to servicing please see the Honda petrol engine's manual provided separate to the tank's manual.

9. Warranty

The water bowser is warranted by Fuel Proof Ltd to be free from defective workmanship and material for a period of three years from the date of purchase, the warranty covers only static installations. During this period any parts which the manufacturer agrees to be defective in workmanship or material will be repaired or replaced without charge.

Defective products or parts must be returned to the manufacturer for warranty approval, unless otherwise agreed with Fuel Proof Ltd. Replacement products or parts will be invoiced, and a credit will then be raised following satisfactory approval.

All parts or products replaced by Fuel Proof Ltd during the warranty period shall become the property of Fuel Proof Ltd.

Fuel Proof Ltd may, at its own discretion, make any repairs to or replace defective parts not covered under warranty; however this work shall not be deemed to be any admission of liability.

Fair wear and tear or damage caused by misuse, improper maintenance or neglect, shall not come within the terms of this warranty.

Damage caused to the finish of the product must be repaired in a timely and satisfactory manner to avoid the risk of further deterioration. If the repairs are not carried out to Fuel Proof Ltd's satisfaction, the warranty may be void. The warranty only covers the structural integrity of the product but not the cosmetic or aesthetic appearance, including galvanized, plated or painted surfaces.

Any modifications that are carried out to parts or products may invalidate the warranty.

Please contact Fuel Proof Ltd for the full extended warranty.